



MONTHLY MEMBERSHIP PROGRESS REPORT

District 105 E

Results as of: 6/30/2015

GMT: Elisabeth Haderer

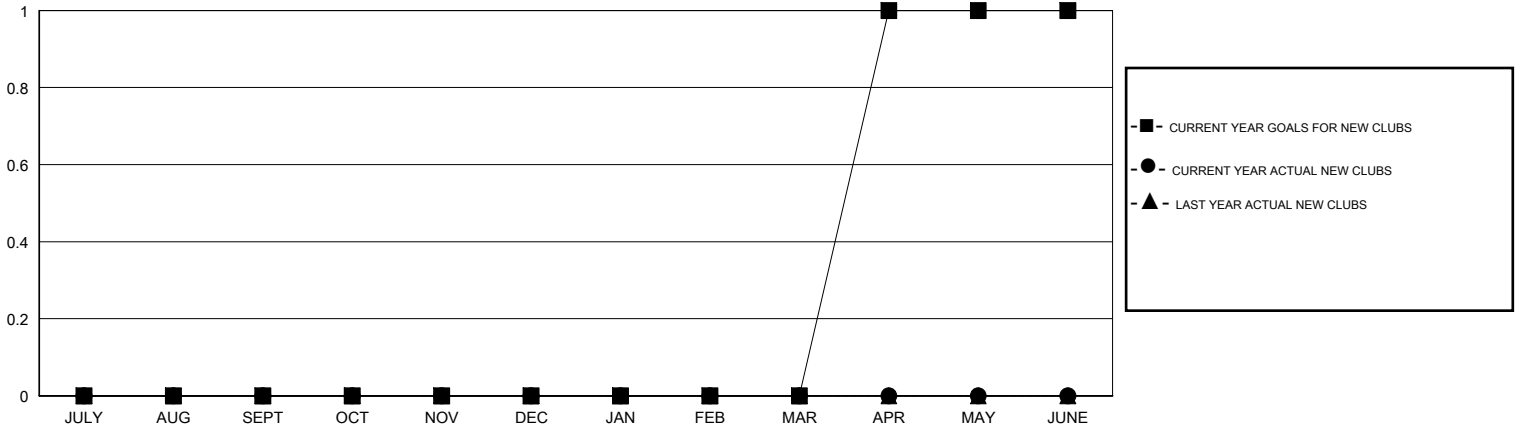
LOCATION ENGLAND

GMT CA 4

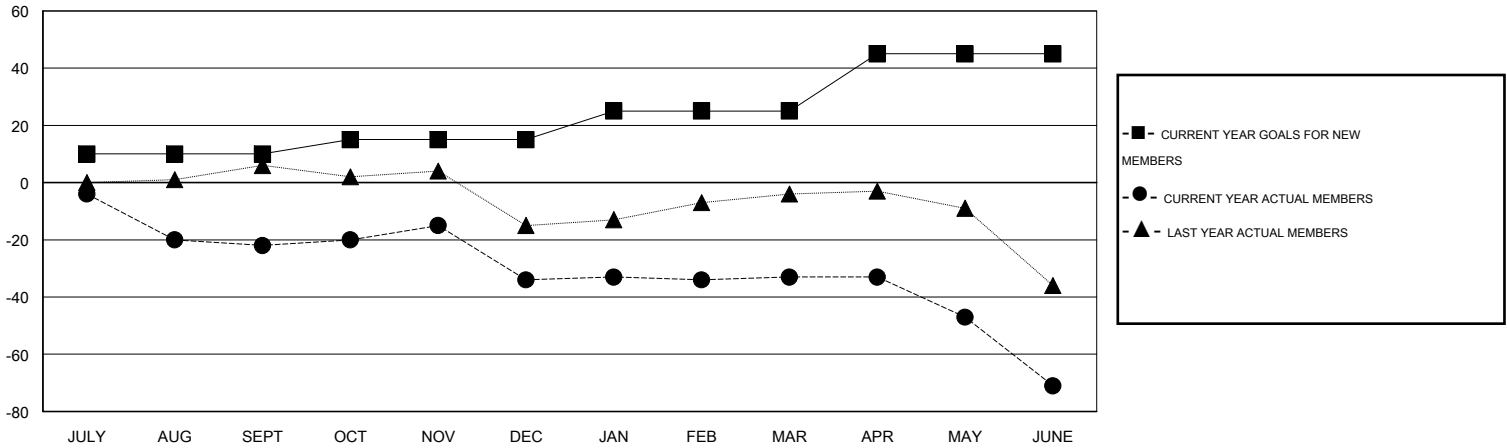
Clubs				
RESULTS FOR 2014-2015				
QUARTER	NEW CLUB GOAL	NEW CLUBS	DROPPED CLUBS	NET GAIN/LOSS
JULY/AUG/SEPT	0	0	2	-2
OCT/NOV/DEC	0	0	0	0
JAN/FEB/MAR	0	0	1	-1
APR/MAY/JUNE	1	0	1	-1

Members				
RESULTS FOR 2014-2015				
QUARTER	NEW MEMBER GOAL	CHARTER AND NEW MEMBERS ADDED	DROPPED MEMBERS	NET GAIN/LOSS
JULY/AUG/SEPT	10	12	34	-22
OCT/NOV/DEC	5	21	33	-12
JAN/FEB/MAR	10	27	26	1
APR/MAY/JUNE	20	13	51	-38

GOALS AND ACTUAL NEW CLUBS CUMULATIVE



GOALS AND ACTUAL MEMBERS CUMULATIVE



DROPPED CLUBS: 4	34 CLUBS OF 59 ADDED 1 OR MORE NEW MEMBERS	GENDER DISTRIBUTION MALE 824 (76.58%) FEMALE 252 (23.42%)
DROPPED MEMBERS DECEASED 9 CLUB CANCELLED 0 OTHER 135 TOTAL 144	CLICK HERE FOR HEALTH ASSESSMENT DATA	FAMILY UNIT MEMBERS 153 HEAD OF HOUSEHOLD 74 NON-HEAD OF HOUSEHOLD 79